



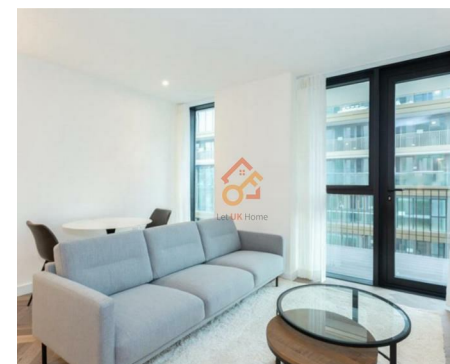
萊英家  
Let UK Home

1 Bedrooms

Flat

Located in London

£3,000 Per Month



[info@letukhome.co.uk](mailto:info@letukhome.co.uk)

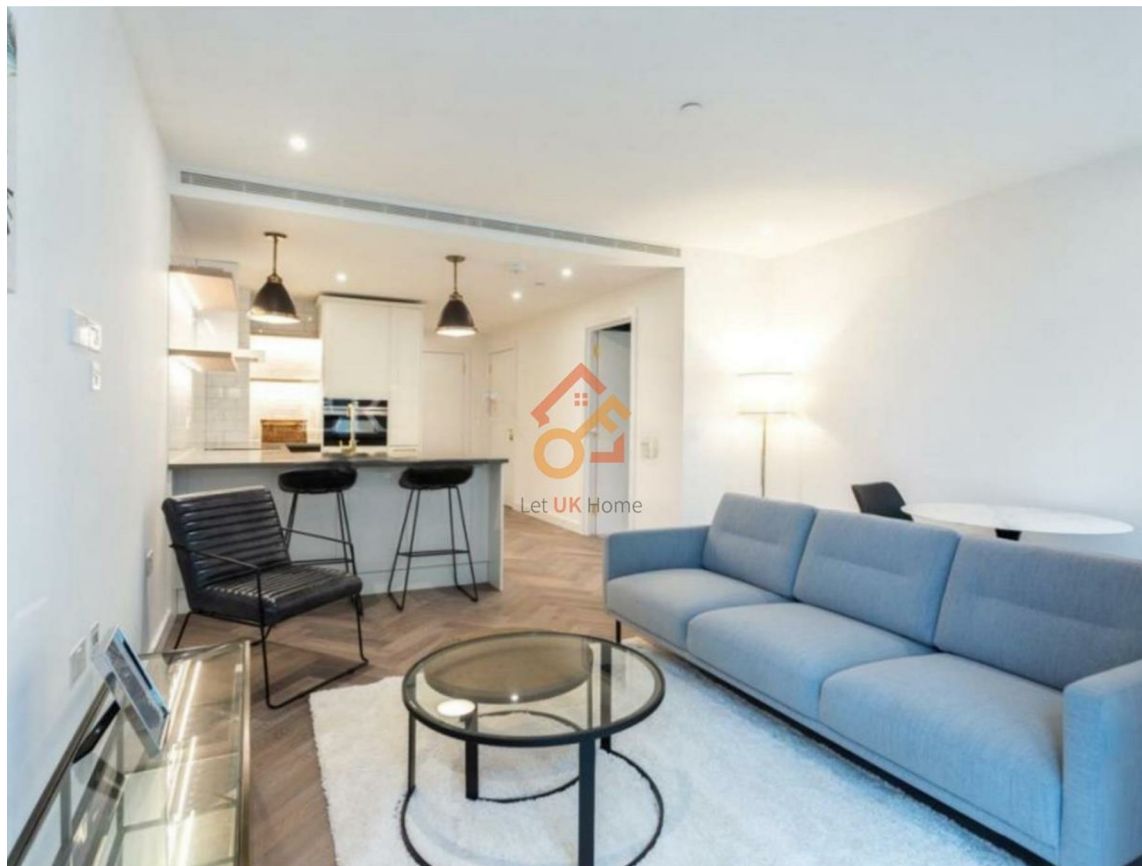
<https://www.letukhome.co.uk/>

02045348146



# 23 Gauging Square London

E1W 2AW



Let UK Home are excited to offer this spectacular one bedroom apartment in Cashmere Wharf, part of the London Dock development.

The flat comprises a spacious open kitchen with a stylishly attached dining area, a magnificent living room leading to a private balcony, one bright bedroom with wardrobe and ensuite, one toilet room and ample storage.

Residents of this exceptional development have exclusive use of indoor swimming pool, sauna & steam room, squash room, virtual golf suite, private cinema, gymnasium, and residents lounge. Furthermore, residents will also benefit from a 24 hour concierge and an unrivalled selection of shops, bars, restaurants, leisure facilities and beautiful courtyards.

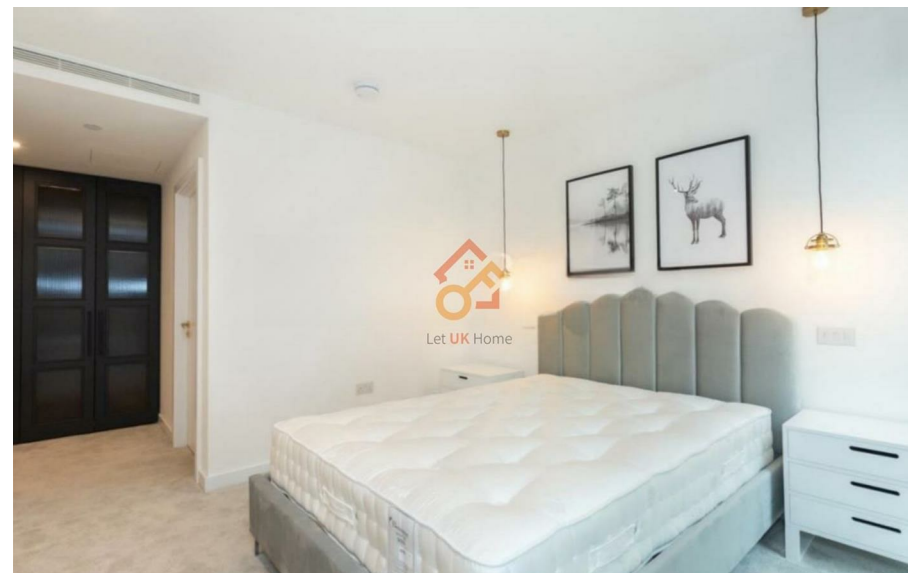
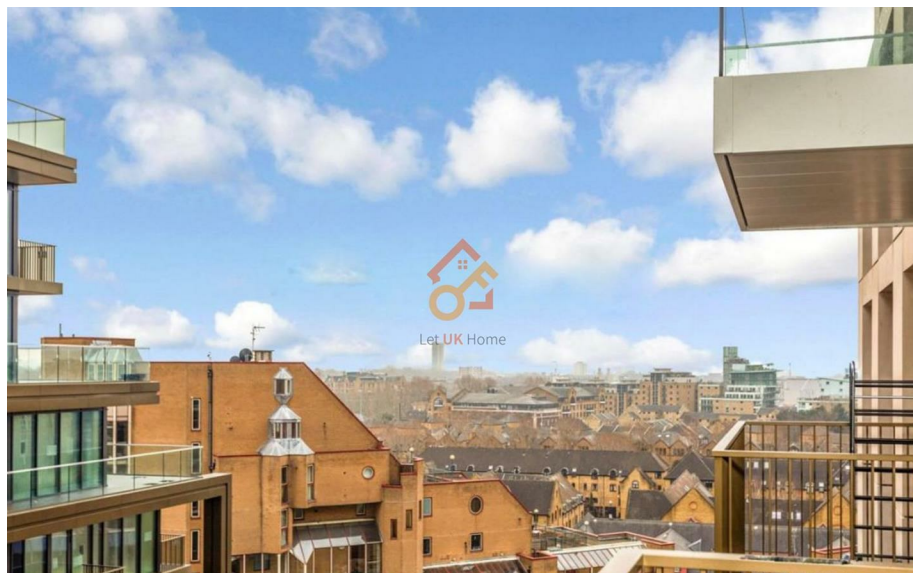
The apartment is located near the riverside, surrounded by beautiful landscaped squares and boulevards, close to City of London and St Katharine Docks. The world-famous Tower Bridge is within walking distance. Gauging Square is the center of the entire community, lined with restaurants, cafes and bars. The supermarket-Sainsbury's brings ease and convenience to residents' daily life.

# 23 Gauging Square London

## £3,000 Per Month

- 8th Floor
- 24h Security
- The Gym
- Squash Room
- Virtual Golf Suite

- Concierge Service
- Swimming Pool
- Cinema & Game Room
- The Spa
- Sauna & Steam Room





### ONE BEDROOM

| TOTAL AREA           | 57 M <sup>2</sup> | 614 SQ FT     |
|----------------------|-------------------|---------------|
| KITCHEN              | 3.02m x 1.92m     | 9'10" x 6'3"  |
| LIVING / DINING ROOM | 4.21m x 3.49m     | 13'8" x 11'4" |
| BEDROOM              | 3.42m x 3.28m     | 11'2" x 10'8" |
| BALCONY              | 5 M <sup>2</sup>  | 54 SQ FT      |



萊英家  
Let **UK** Home

6/F Two Kingdom Street

London

W2 6BD

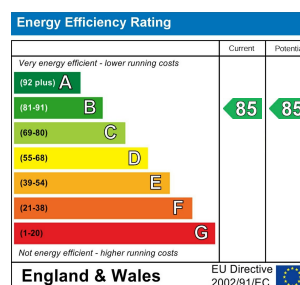
02045348146

info@letukhome.co.uk

**Council Tax Band: F**

**Local Authority:**

Agents Note: Whilst every care has been taken to prepare these particulars, they are for guidance purposes only. All measurements are approximate and are for general guidance purposes only and whilst every care has been taken to ensure their accuracy, they should not be relied upon and potential buyers/tenants are advised to recheck the measurements.



<https://www.letukhome.co.uk/>